

STAINLESS STEEL LOBOY SERIES CONDENSATE RETURN UNITS & BOILER FEED SYSTEMS



432 East South Street • Plano, IL 60545

Ph: 630.552.3622 • Fax: 630.552.8220

www.fabtekaero.com



Standard Features All Fabtek SSLB Series

- 304 SS Cylindrical Receivers with 20 Year Warranty against failure due to corrosion.
- 304 SS Vertical Flange Mounted Centrifugal Pumps
- Heavy Duty SS Tank Saddles
- Heavy Duty SS Sight Gauge Valve Assembly
- TEFC Motor Enclosures

**EXCEPTIONAL VALUE
EXTRAORDINARY QUALITY**

- Eleven Standard Sizes
- 54 - 517 Gallons
- Simplex or Duplex Pump Configurations

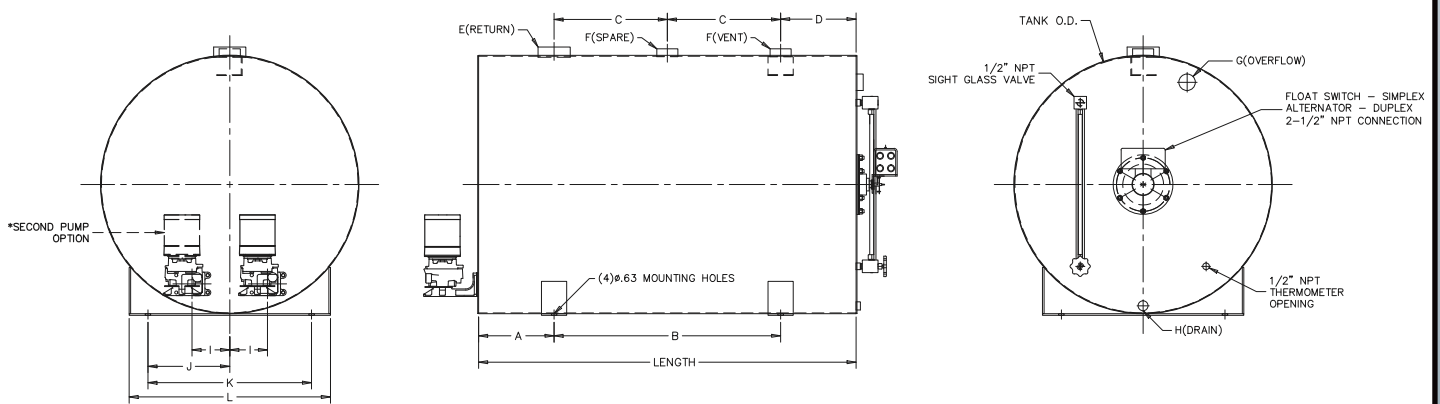
FABTEK LBCRU SERIES STAINLESS STEEL CONDENSATE RETURN UNITS

Include all standard stainless steel LB series features and NEMA1 float switch (simplex) or NEMA1 mechanical alternator (duplex) for level control.

AVAILABLE OPTIONS

- Thermometer
- Discharge Pressure Gauges
- UL Listed Control Panels
- Washdown Duty Units
- Basket Strainers
- Stainless Steel Suction Isolation Valves
- Level Alarm Switches
- Custom Tanks and Configurations Available

DIMENSIONS



| LOWBOY – SIMPLEX/DUPLEX CONDENSATE UNIT DIMENSIONS | | | | | | | | | | | | | | WEIGHTS | | |
|----------------------------------------------------|-----------|--------|----|----|----|----|---|-------|-------|-------|-------|-----|----|---------|---------|--------|
| GALLONS | TANK O.D. | LENGTH | A | B | C | D | E | F | G | H | I | J | K | L | SIMPLEX | DUPLEX |
| 54 | 23 | 30 | 6 | 18 | 8 | 6 | 2 | 1-1/2 | 1-1/4 | 3/4 | 4-1/4 | 8 | 16 | 20 | 220 | 270 |
| 65 | 23 | 36 | 6 | 24 | 12 | 6 | 2 | 1-1/2 | 1-1/4 | 3/4 | 4-1/4 | 8 | 16 | 20 | 235 | 285 |
| 102 | 25 | 48 | 10 | 28 | 16 | 8 | 3 | 1-1/2 | 1-1/4 | 3/4 | 4-1/4 | 9 | 18 | 22 | 280 | 330 |
| 127 | 25 | 60 | 10 | 40 | 18 | 12 | 3 | 1-1/2 | 1-1/2 | 3/4 | 4-1/4 | 9 | 18 | 22 | 310 | 360 |
| 157 | 31 | 48 | 10 | 28 | 16 | 8 | 3 | 1-1/2 | 2 | 1 | 5 | 9.5 | 19 | 25 | 390 | 440 |
| 184 | 30 | 60 | 10 | 40 | 18 | 12 | 3 | 1-1/2 | 2 | 1 | 5 | 9.5 | 19 | 25 | 430 | 480 |
| 209 | 32 | 60 | 10 | 40 | 18 | 12 | 4 | 1-1/2 | 2 | 1 | 5 | 10 | 20 | 26 | 460 | 510 |
| 251 | 32 | 72 | 14 | 44 | 18 | 18 | 4 | 1-1/2 | 2 | 1 | 5 | 10 | 20 | 26 | 510 | 560 |
| 360 | 42 | 60 | 12 | 36 | 18 | 12 | 4 | 2-1/2 | 2 | 1 | 6 | 13 | 26 | 32 | 610 | 660 |
| 431 | 46 | 60 | 12 | 36 | 18 | 12 | 4 | 2-1/2 | 2 | 1-1/4 | 6 | 15 | 30 | 36 | 960 | 1010 |
| 517 | 46 | 72 | 14 | 44 | 18 | 18 | 4 | 2-1/2 | 2 | 1-1/4 | 7 | 15 | 30 | 36 | 1310 | 1360 |

NOTES: 1) ALL DIMENSIONS ARE IN INCHES
2) DIMENSIONS MAY VARY .5 INCHES
3) SADDLES ARE CONSTRUCTED OUT OF 1/4x4 STAINLESS STEEL PLATE



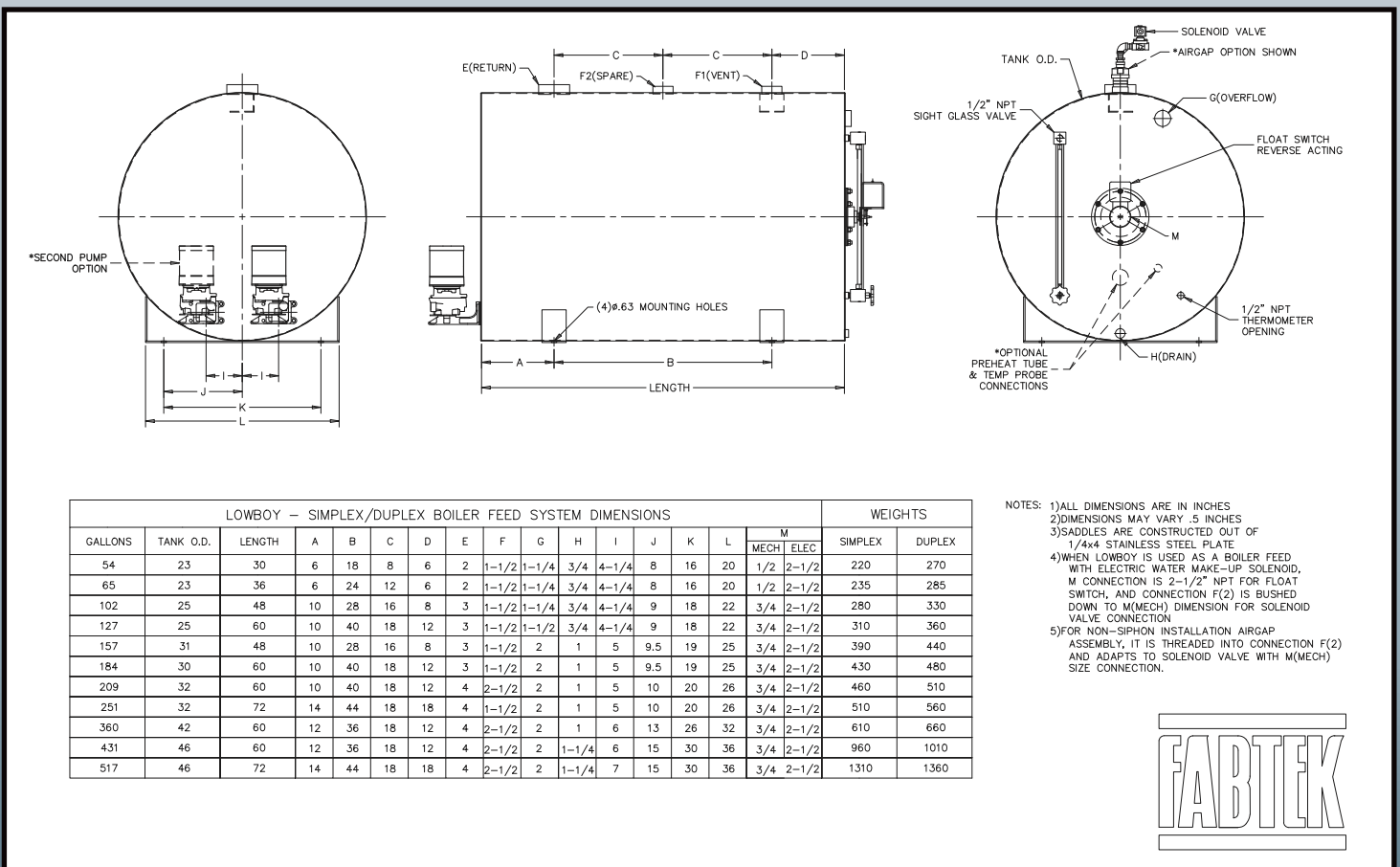
FABTEK LBBFS SERIES STAINLESS STEEL BOILER FEED SYSTEMS

Include all standard stainless steel LB series features and electric solenoid/float switch fresh water make up assembly.

AVAILABLE OPTIONS

- Thermometer
- Discharge Pressure Gauges
- UL Listed Control Panels
- Steam Preheat Packages
- Air Gap Fittings
- Basket Strainers
- Stainless Steel Suction Isolation Valves
- Level Alarm Switches
- You name it, we've done it
- Custom Tanks and Configurations Available

DIMENSIONS



TANK ACCESSORIES

**STAINLESS STEEL SIGHT
GAUGE VALVE ASSEMBLY**



**316 STAINLESS STEEL
CHEMICAL INJECTION QUILL**



**STAINLESS STEEL PUMP
SUCTION ISOLATION VALVES**



**STAINLESS STEEL STEAM
INJECTORS & SPARGE TUBES**

